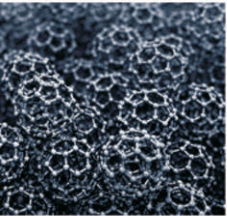
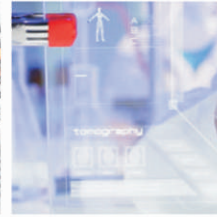




JINYIBO INSTRUMENT
Precise Instruments, Perfect Experience

CS8820S

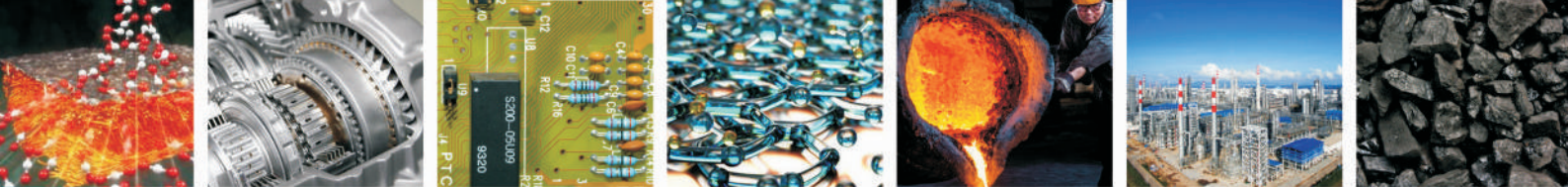
Carbon/Sulfur Analyzer



Carbon/Sulfur Analysis by
Combustion NDIR Measurement



*The most user-friendly Carbon/sulfur Analyzer available!
Dust-free, low maintenance and no experience required.*



CS8820S

Carbon/Sulfur Analyzer

The new CS8820S Carbon/Sulfur Analyzer has been developed based on JINYIBO's abundant Non-Dispersive Infrared (NDIR) technologies and the wealth of experience acquired from our successful Carbon/Sulfur Analyzer.

This "Made in China" product offers low owner cost and four unique features to allow anyone to become a professional analyst.

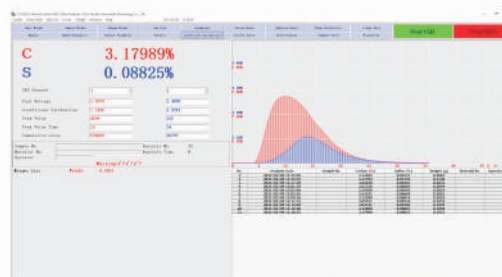
1 Advanced Operation Software

Advanced User-Friendly Interface

The user-friendly-designed software for the CS series makes the best of an intuitive menu design that displays only those items required for each operation.

For example, in the measurement window, only the related menus for the measurement are shown.

The new software platform enables everyone to operate the CS series without long hours of software training.



Automatic Diagnosis System

When any fault occurs, we can use several hot keys to find where is wrong. As we say automatic leak detection, diagnosis function.

Thus, CS8820S saves the user unnecessary downtime and running cost.

Gas Path Test (ESC) Status	
1. Total Air Value	On/Off
2. Oxygen Blowing Valve	On/Off
3. Oxygen Carrying Valve	On/Off
4. Cleaning Valve	On/Off
5. Entrance of Gas Chamber	On/Off
6. Exit of Gas Chamber	On/Off
7. Ash Discharge	On/Off
8. High Frequency Furnace	On/Off
Cylinder Signal	Y / N

Some Special Function

It has the functions of channel selection, data statistics, breakpoint correction, results corrected, the system of detecting, system diagnostics and more than forty functions.

There are 100 carbon and sulfur release curves (each 50), it is can be stored at any time, and can be complete with carbon release curve and sulfur release curve.

Linearization calibration technology in full range, there are single and multi-point calibration, it can be set up one, two, three and more Linear calibration equation, and it improves linear calibration equation and the correction of analysis data.

2 Long MTBM (Mean Time Between Maintenance)

The whole machine adopts modular design, highly integrated electronic circuits, it is very stable and reliable, meanwhile, it is adopted multi-level isolation so as to resolve high frequency interference thoroughly.

It is adopted 32-bit sampling chip which belongs to America Analog Devices Company so it has fast speed and high precision.

special aviation motor, its thermal stability well, it has a long service life.

Gold-plated carbon and sulfur analysis pool and High-precision pyroelectric infrared detector.

special new type platinum infrared light source, it is efficient and its spectral stability.

High-frequency furnace output is power and power adjustable, it is suitable for all kinds of sample combustion analysis, a wide range of test materials, the whole machine adopts Import solenoid valve, high-frequency Ceramic power tube etc.



3 High Throughput

Generally it takes about 35 seconds for a user to analysis a sample. (Adjustable 20-60s)

This quick and efficient procedure reduces the cycle time and enables the user to enjoy a stress-free operation environment.



4 Fast and Easy Maintenance

The whole machine adopts modular design, highly integrated electronic circuits

it is adopted high quality linear integrated military-grade power module

it is adopted Self-excited directional coupler

Fully automatic cleaning system with noiseless and vacuum-free dust removal: no routine maintenance, vacuum free dust removal into the crucible



Application: CS8820S is used in industries such as steel, mining, construction material, food, geology, commercial inspection, automotive and aviation, and in universities for Research & Development.

Application Examples



Steel Products

Steel Plate/sheets/bar pipe,
Automotive steel sheet,
Casting iron,
Steel slag etc.



Electrical Material

Capacitor,
Solder,
Target material,
Bonding wire,
Filler.



Non-ferrous Alloy

Cooper,
Nickel,
Aluminum,
Zinc,
Tungsten carbide



Energy

Electrode material of li-ion battery
Si water for solar cell,
SiC for power device

Technical Specifications

Sample weight	0.5g
Carbon measurement range	0.00001%-99.99999%
Sulfur measurement range	0.00001%-99.99999%
Standard	According to ISO9556 / ISO4935 / JJG395-97
Analysis precision	C: \leq RSD0.5%. S: RSD \leq 1.0%
Sensitivity(Accuracy)	C/S 0.1ppm
Cycle time(Average)	20–60s adjustable (Usually 35s)
Carrier gas	Oxygen:Purity \geq 99.5%. Pressure: 0.18MPa \pm 5%
Operation gas	Oxygen:Purity \geq 99.5%.Pressure:0.18MPa \pm 5%
Power	AC220V \pm 5%,50HZ \pm 2%
Dimensions	540mm(L)*600mm(W)*800mm(H)
Weight	80Kg

Accessories

Ceramic Crucible

Low carbon blank and high dimension tolerance for high precision analysis.



Accelerators

High-purity materials which support stable analysis:
Tungsten (W), Tin (Sn),
Copper (Cu), Iron (Fe), etc.



Certificated Reference Materials(CRMs)

Others

Other accessories such as Combustion Tube, De-dusting Tube, Combustion Tube Brush Cleaner,Oscillator, Desiccant etc., are also available.



CS8820S Analysis Report

Date	Sample	C%	S%	W(g)	Operator
2019/09/07 09:55:25	10# Steel	0.11184	0.01740	0.4959	Eng. Ye Mao
2019/09/07 09:57:24		0.11241	0.01753	0.5036	
2019/09/07 09:58:56		0.11306	0.01761	0.5034	
2019/09/07 10:00:16		0.11398	0.01787	0.5296	
2019/09/07 10:02:33		0.11273	0.01766	0.5009	
2019/09/07 10:49:44	45# Steel	0.43382	0.00636	0.4993	Eng. Ye Mao
2019/09/07 10:51:20		0.42855	0.00699	0.5176	
2019/09/07 10:52:37		0.42995	0.00693	0.5161	
2019/09/07 10:54:13		0.43421	0.00688	0.5251	
2019/09/07 10:55:30		0.43558	0.00718	0.5303	
2019/09/07 11:00:45	304 Stainless Steel	0.06344	0.01581	0.5073	Eng. Ye Mao
2019/09/07 11:02:20		0.06300	0.01525	0.5120	
2019/09/07 11:03:46		0.06332	0.01520	0.5156	
2019/09/07 11:06:37		0.06502	0.01583	0.5226	
2019/09/07 11:08:05		0.06348	0.01602	0.5137	
2019/09/07 11:14:33	Cr12MoV Steel	1.57511	0.00898	0.5076	Eng. Ye Mao
2019/09/07 11:15:51		1.59999	0.00902	0.5144	
2019/09/07 11:17:04		1.57251	0.00918	0.5118	
2019/09/07 11:18:30		1.59484	0.00915	0.4968	
2019/09/07 11:19:49		1.58365	0.00897	0.5194	
2019/09/07 16:19:17	Cr12 Steel	2.18922	0.01110	0.5159	Eng. Ye Mao
2019/09/07 16:20:46		2.18587	0.01173	0.5043	
2019/09/07 16:21:58		2.20799	0.01131	0.4930	
2019/09/07 16:24:09		2.18787	0.01141	0.4942	
2019/09/07 16:25:27		2.19062	0.01141	0.4991	
2019/09/07 16:34:14	Cast Iron	3.94234	0.02610	0.2160	Eng. Ye Mao
2019/09/07 16:35:28		3.94802	0.02614	0.2023	
2019/09/07 16:37:20		3.94617	0.02596	0.2047	
2019/09/07 16:39:00		3.94524	0.02582	0.2053	
2019/09/07 16:42:27		3.94063	0.02600	0.2000	





Sales & Service Offices Overseas:

Canada, U.S.A, Mexico, Brazil, England, Turkey, Belarus, South Africa, Zambia, Zimbabwe, Namibia, Ghana, Mali, Rwanda, Uganda, Ethiopia, Kenya, Tanzania, Sudan, Morocco, Egypt, Saudi Arabia, Iran, Pakistan, India, Thailand, Vietnam, Malaysia, South Korea, Indonesia

Sales & Service Offices in China:

Dongguan, Ningbo, Hefei, Chengdu, Changsha, Wuhan, Zhenzhou, Xi'an, Jinan, Shijiazhuang, Baotou.

WUXI JINYIBO INSTRUMENT TECHNOLOGY CO.,LTD. WUXI JINYIBO DETECTION TECHNOLOGY CO.,LTD.

📍 Add.: No.35 Jingsheng Rd.,Huishan District,
Wuxi City 214151, Jiangsu Province, China

☎ Tel.: +86-510-8322 3658 +86-510-8321 7963

📱 Cell.: +86-183 5283 6805

📠 Fax.: +86-510-8322 3758

🌐 Web.: www.jinyibo.com

✉ E-mail: sales@jinyibo.com



Products to prevail in kind, the picture is for reference only, Copyright. ownership belongs to Jinyibo company, shall not be reproduced, copied, or used in other ways without permission.